



Invitation to join Municipal Waste Europe

What is Municipal Waste Europe?

Municipal Waste Europe is the European association representing municipalities responsible for waste management and their publicly owned waste management companies promoting public responsibility for waste management as a service of general interest.

We invite national or regional associations representing public sector waste management to join us to strengthen the European discussion on Public Waste.

How was Municipal Waste Europe started?

Municipal Waste Europe is founded in 2008 with the aim to promote public responsibility for waste and to provide a platform for policy input.

We aim to give municipal waste management a higher profile in Brussels by promoting the joint policy principles towards the EU authorities and others. The association also encourages the exchange of information among network members as well as sharing success stories involving local and regional systems.

What is the aim of Municipal Waste Europe?

Waste management services are a crucial aspect of the social responsibility for the environment and public health in Europe. The collective waste management infrastructure, including collection and treatment systems, is best developed through national, regional and local planning. Municipal Waste Europe promotes waste management as a service of general interest. Public sectors participation on the market is also important in order to provide the most competition and diversity between operators.

Key dossiers and positions

The work of Municipal Waste Europe is carried through selected Policy dossiers, covering Services of General interest, public procurement, public procurement and the development of end-of-waste criteria for specific waste streams. The internal Policy Committee continuously develops the Policy Dossiers. Please contact the secretariat for your updated list of current Policy Dossiers.

Can I become member?

The members of Municipal Waste Europe are all national or regional public waste associations representing municipal waste responsibility within Member States of the European Union or of the European Free Trade Area (EFTA). In countries where there are no such associations, a large municipality, a region or a group of municipalities may become a member. Members are linked by their commitment to sustainable waste management that minimises environmental impact and promotes resource efficiency, taking into account local conditions.

The current members are 18 from 16 Countries:

Austria - ARGE Österreichischer Abfallwirtschaftsverbände

Austria, Vienna - MA 48 Municipal Department 48

Belgium, Flanders- Interafval

Belgium, Wallonia - COPIDEC

Denmark – Dansk Affalds Forening

Finland – JLY Jätelaitosyhdistys

France – AMORCE

Germany – VKU

Greece - Di.Fo.Di.S.A

Iceland – Samband

Italy – Federambiente

Netherlands - NVRD

Norway –Avfall NOrg

Poland - KIGO

Portugal - EGSRA

Slovenia – Chamber of Local Public Economy

Sweden – Avfall Sverige

United Kingdom - LARAC



If you fulfil the conditions to become a member, we welcome you as a member!

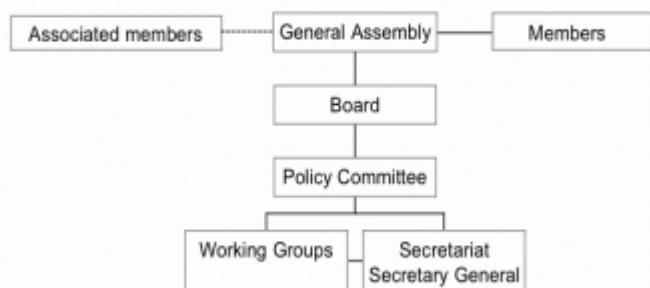
The more national and regional associations joining the stronger our voice becomes and we can share the cost and burden being represented in Brussels. All unable to join as full member, are welcome to apply for an associated membership.

How is Municipal Waste Europe organized?

All full members are represented in both the General Assembly and in the Policy Committee. All members are welcome to join all active Expert Groups, which are established thematic and with current issues assigned to them. Further information about the formal structure of Municipal Waste Europe can be found in our statutes, available in English and in French on www.municipalwasteurope.eu.

The secretariat welcomes posted workers from the member associations to join our daily work for shorter or longer periods of time.

Organisation



What do I get from Municipal Waste Europe?

Membership of Municipal Waste Europe provides members with privileged insight into the pre-legislative discussions of the European institutions as well as close access to its staff. Municipal Waste Europe has built up a strong reputation for representing the requirements and requests of the European public sector in waste management, giving its members direct access to the legislative process.

Members can participate actively in this process by nominating experts to the Expert Groups, which are formed in accordance with active policy areas, by participating in meetings of the Policy Committee (four per year) and giving input into the adoption of position papers and statements. In this way, members have a strong voice in Europe through direct participation in the process of developing policy. Members must nominate one or two members to the Policy Committee, in accordance with the requirements of Municipal Waste Europe's Statutes.

Members also receive a weekly email update named the Internal Update, giving the latest developments, meetings and European timeline on the various policy issues.

In addition to its external lobbying function, on the development and shaping of European legislation in our fields of importance, Municipal Waste Europe also promotes and provides a basis for the exchange of experience and knowledge amongst its members. In this light, we are most pleased to be able to share with our new colleagues, the experiences and local adaptations in other Member States amongst our members and to learn from your experience, techniques and technologies in your local management of municipal waste.



How much?

Members share the burden of the cost of the secretariat by dividing the budget between the members associations based on the represented population and national GDP, allowing for a reduction for those countries whose GDP is below the European Average. The membership fees and contributions are established at the Annual General Assembly.

Joining members are offered to pay increasing contributions over three years to reach the full membership fee, generally in a progression of half, 2/3 and then full membership fee. Associated members contribute to the association with an annual, flat fee of €5000.

For more information

For more information please see: www.municipalwasteurope.eu

You are welcome to contact any of the present members for more information about the work of Municipal Waste Europe.

Vanya Veras, Secretary General

Office: +32 2 229 2145

Email: vanya.veras@municipalwasteurope.eu

Post address:

Municipal Waste Europe, Rue des deux Eglises 26 bt 5, BE- 1000 Brussels, Belgium